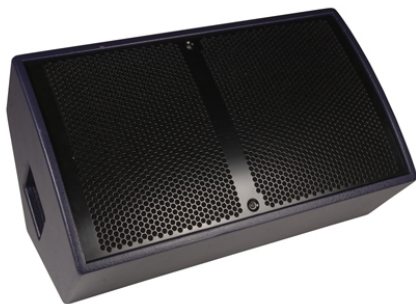


## RM12 & RM15

The RM12 and RM15 compact monitors are designed for static stage performer or DJ use. Mid and high frequencies are delivered with exceptional coherence from the 5" paper cone transducer originally designed for the innovative R1 loudspeaker. The Funktion One designed lightweight Neodymium 12" and 15" low frequency drivers are incorporated into the enclosures with a special loading technique. This technology results in bass performance normally associated with horn loaded boxes whilst maintaining the size and weight of their ported counterparts.

Both monitors are ideal for use as highly accurate and powerful DJ monitors with their low distortion significantly reducing ear fatigue compared with compression driver based alternatives. The horizontal dispersion of these monitors (in stage orientation) is relatively narrow and so on stage they are at their best with static performers.

The enclosures are provided with integral 35mm pole mounts, so that they can also be deployed as main PA loudspeakers, and come complete with a sturdy, foam backed, full metal grille. They are both available with optional passive crossovers.

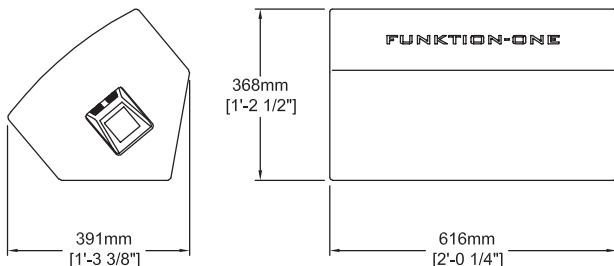


### RM12

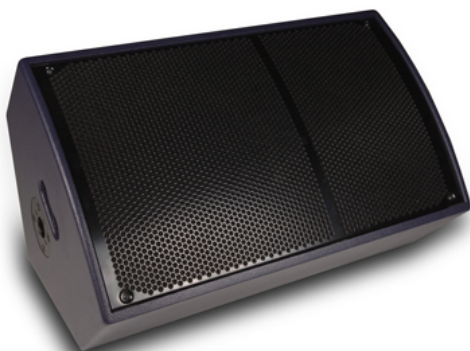
Driver	Operating Band*	Sensitivity (1W at 1m)	Power (rms**)	Nominal Impedance
12"	28 - 721Hz	100dB	300W	8Ω
5"	721Hz - up	113dB	75W	12Ω

\*Please check website for latest crossover settings

\*\*AES rated



Frequency Response $\pm 3\text{dB}$ :	65Hz - 15kHz
Weight (without wheelboard):	20kg (45lbs)
Nominal Dispersion:	25° x 50°
Connectors:	2 x Speakon NL4

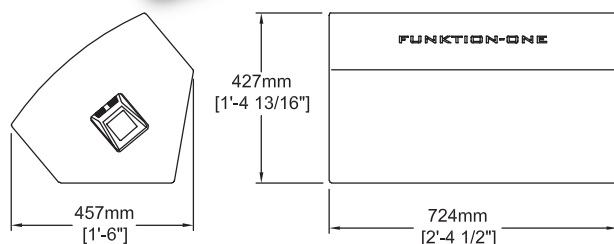


### RM15

Driver	Operating Band*	Sensitivity (1W at 1m)	Power (rms**)	Nominal Impedance
15"	25 - 721Hz	102dB	400W	8Ω
5"	721Hz - up	113dB	75W	12Ω

\*Please check website for latest crossover settings

\*\*AES rated



Frequency Response $\pm 3\text{dB}$ :	50Hz - 15kHz
Weight (without wheelboard):	27kg (60lbs)
Nominal Dispersion:	25° x 50°
Connectors:	2 x Speakon NL4

